

**Berry College**

***Fact Book***

**2022-2023**

Prepared by the

Office of Institutional Research

October 25, 2023

Table of Contents

<i>Section</i>	<i>Page</i>
I. General Information . . . . .	1
Accreditation . . . . .	2
Mission and Purpose . . . . .	3
<i>Graduate</i> Programs, Vision and Purpose . . . . .	4
Important Dates in Berry’s History . . . . .	5
Administrative Officers . . . . .	7
Organizational Chart of Berry College . . . . .	10
Degrees and Majors . . . . .	11
Minors . . . . .	12
II. Student Information . . . . .	13
Comparative Enrollment Statistics . . . . .	14
Historical Enrollment . . . . .	15
<i>Undergraduate</i> Program Enrollment History by Schools and Undeclared Majors . . . . .	16
<i>Graduate</i> Program Enrollment History . . . . .	17
Geographic Distribution of Total Enrollment . . . . .	18
<i>Total Undergraduate</i> Enrollment by Ethnic Classification . . . . .	19
<i>Total Graduate</i> Enrollment by Ethnic Classification . . . . .	20
<i>Undergraduate</i> Enrollment Analysis of Other Countries Represented . . . . .	21
<i>Graduate</i> Enrollment Analysis of Other Countries Represented . . . . .	22
SAT/ACT Scores of Entering First-Year Students . . . . .	23
High School GPA of Entering First-Year Students . . . . .	24
First-Year Students–Berry College Retention and Graduation Rates . . . . .	26
Transfer Students–Berry College Retention and Graduation Rates . . . . .	27
Age Distribution of <i>Undergraduate</i> Students . . . . .	28
Age Distribution of <i>Graduate</i> Students . . . . .	29
III. Academic Profile . . . . .	30
Number of <i>Undergraduate</i> Majors by Schools . . . . .	31
Summary of <i>Undergraduate</i> Majors and Minors by Schools . . . . .	31
Number of <i>Undergraduate</i> Majors in Rank Order . . . . .	32
Number of <i>Graduate</i> Majors . . . . .	35
Number of <i>Undergraduate</i> and <i>Graduate</i> Majors Summary . . . . .	35
Dean’s List Summary (Undergraduates) . . . . .	36

III. Academic Profile (Continued)

Degrees Granted, 2009-2010 Through 2022-2023 . . . . .	37
Total Degrees Awarded, 2021-2022 Through 2022-2023 . . . . .	38
<i>Undergraduate</i> Degrees Awarded by Degree and Major . . . . .	39
<i>Graduate</i> Degrees Awarded by Degree and Major . . . . .	42
<i>Undergraduate</i> Students Graduating With Honors . . . . .	43
Alumni Receiving Master's Degree or Higher . . . . .	44

IV. Faculty Profiles . . . . . 45

Institutions Most Frequently Represented by Berry Faculty's Doctorate . . . . .	46
Faculty . . . . .	48
Full-Time Faculty, Rank and Degree . . . . .	49
Full-Time Faculty, Gender Distribution Among Ranks . . . . .	50
Berry College Faculty, Number and Percent Tenured in Top Three Ranks . . . . .	51
Full-Time-Equivalent Faculty and Faculty-Student Ratio . . . . .	52
Age Distribution of Full-Time Faculty . . . . .	53

V. Financial . . . . . 54

Alumni Annual Giving . . . . .	55
Berry College Financial-Aid Programs . . . . .	56

## Section I

### General Information

### Accreditation

Berry College is accredited by the Southern Association of Colleges and Schools Commission on Colleges (SACSCOC) to award baccalaureate, masters, and education-specialist degrees. Questions about the accreditation of Berry College may be directed in writing to the Southern Association of Colleges and Schools Commission on Colleges at 1866 Southern Lane, Decatur, GA 30033-4097, by calling (404) 679-4500, or by using information available on SACSCOC's website ([www.sacscoc.org](http://www.sacscoc.org)). Berry's music program is accredited by the National Association of Schools of Music (NASM). Berry's Nursing program is accredited by the Commission on Collegiate Nursing Education (CCNE).

Berry's programs in business are accredited by the Association to Advance Collegiate Schools of Business (AACSB). Berry's programs in Teacher Education are accredited by the Georgia professional Standards Commission.

Berry College is authorized to operate educational programs beyond secondary education in the state of Georgia. That authorization designates the Georgia Non-Public Postsecondary Education Commission as the state agency responsible for receiving complaints made by students enrolled at Berry College. Students may contact the Georgia Non-Public Postsecondary Education Commission to file a complaint using the following contact information: Georgia Non-Public Postsecondary Education Commission, 2082 East Exchange Place, Suite 220, Tucker, GA 30084-5305, Office: (770) 414-3300.

The baccalaureate degree program in nursing at Berry College is accredited by the Commission on Collegiate Nursing Education

## Mission and Purpose

*Berry College is a comprehensive liberal-arts college with Christian values. The college furthers our students' intellectual, moral and spiritual growth; proffers lessons that are gained from worthwhile work done well; and challenges them to devote their learning to community and civic betterment. Berry emphasizes an educational program committed to high academic standards, values based on Christian principles, practical work experience and community service in a distinctive environment of natural beauty. It is Berry's goal to make an excellent private liberal-arts education accessible to talented students from a wide range of social and economic backgrounds.*

Our first responsibility is to provide an education in the liberal arts and professional fields to meet the intellectual, moral, and material needs of our students; and we dedicate ourselves and our academic program toward fulfilling this responsibility. Research, publication, and other scholarly activities are valued and are expected to contribute to good teaching by the faculty. In keeping with this expectation, our faculty and staff dedicate themselves primarily to teaching effectively and to inspiring students to academic excellence.

An essential part of a sound education is the opportunity to explore religious faith and to relate faith with learning responsibly and intelligently, and we dedicate ourselves to providing these opportunities. The college is dedicated to the interdenominational Christian values on which it was founded and welcomes individuals of diverse backgrounds into the campus community.

Worthwhile work complements knowledge and faith in building character. We dedicate ourselves to providing this opportunity. An important part of higher education is the opportunity to participate in the internal affairs and governance of the college. We dedicate ourselves to providing this opportunity for faculty and students.

These dedications guide Berry's faculty, staff, trustees and students toward a realistic and balanced educational program. Our concern for the individual permeates our principles. The ultimate aim of Berry is service to humanity through persons who find here both inspiration and preparation as best expressed in Berry's motto, "Not to be ministered unto, but to minister."

Graduate Programs  
Vision and Purpose

Berry's *vision* is to be a recognized leader in graduate education and support services in its geographic area.

The *purpose* of graduate education at Berry is threefold:

- To prepare Berry graduates for leadership roles with the academic foundation, necessary skills, and personal characteristics needed to be positive contributors to business, education, and the community.
- To deliver high-quality educational support services that meet the needs and challenges faced by Berry's partners in business, in education, and in the community.
- To provide a distinctive learning environment in which innovative thinking, ethical decision making, and individual development and team building can flourish for all constituents of the college.

### Important Dates in Berry's History

- 1866** October 7, Martha Berry's Birthday.
- 1902** January 13, Boys' Industrial School founded.
- 1903** April 6, Boys' Industrial School incorporated by order of the Judge of the Superior Court of Floyd County.
- 1908** Corporate charter amended with legal name changed to "The Berry School."  
The Berry Alumni Association was formed with W. Clayton Henson, the school's first graduate, as its first president.
- 1909** Thanksgiving Day. The Martha Berry School for Girls opened with 14 girls in attendance.
- 1910** Former U.S. President Theodore Roosevelt visited Berry.
- 1914** Miss Berry gave a picnic for students on the mountain campus each year. The Mountain Day celebration which is now held on the first Saturday in October in honor of Miss Berry's birthday, is a time when students and alumni join in celebrating this traditional day.
- 1915** First permanent buildings, Berry College Chapel and Blackstone Dining Hall, were constructed.
- 1916** School for older boys started at foot of Lavender Mountain.
- 1917** Corporate charter amended with legal name changed to "The Berry Schools."
- 1923** The Berry Schools accredited by the Southern Association of Colleges and Secondary Schools.
- 1926** Berry Junior College established.
- 1928** Berry Junior College accredited by Southern Association of Colleges and Secondary Schools.
- 1930** Berry College (senior college) established.
- 1931** The Ford Complex, a gift from Henry and Clara Ford, was completed.
- 1932** First senior-college class received degrees.
- 1942** February 27, Miss Martha Berry died.
- 1957** Berry College accredited by Southern Association of Colleges and Schools.
- 1972** Berry College offers Master of Education (M.Ed.) degree.
- 1973** Berry College offers Master of Business Administration (M.B.A.) degree.
- 1976** Berry College women's basketball team won Berry's first national championship.
- 1982** Corporate charter amended with legal name changed to "Berry College, Inc."
- 1983** Berry Academy closed.
- 1984** WinShape Center established through agreement with Truett Cathy, founder and chairman of Chick-fil-A.
- 1985** Alumni Work Week established.  
Beginning of national recognitions by publications such as U.S. News and World Report.



***Important Dates at Berry (Continued)***

- 1987** Berry College women's soccer team won its first national championship in only its second year of existence.
- 1991** Berry College reorganized: sixteen departments formed into four schools. Business, Education and Human Sciences, Humanities and Social Sciences, Mathematical and Natural Sciences.
- 1993** Joanna Grant, class of 1994, became Berry's first Rhodes Scholar.
- 1995** Campbell Trust gave Berry College \$55 million.
- 1996** Berry was the site of the summer Olympic Youth Camp, a noncompetitive venue of the Centennial Olympic Games in Atlanta.
- 1998** Berry College men's golf team won the national championship.
- 2001** Berry opened a \$25 million, 130,000-square-foot science center. The Ford Motor Company Fund donated \$9.4 million for the renovation of the Ford Complex.
- 2002** Berry celebrated its Centennial anniversary, launching the \$100 million Century Campaign. The Century Campaign's record-breaking goal was achieved early with contributions totaling \$106.1 million.
- 2008** In January 2008, the Stephen J. Cage Athletic and Recreation Center opens, which ties into an overall effort to link academic, residential and campus-life facilities and create a center of the Berry community.  
Berry College joined the Annapolis Group, an organization of leading national independent liberal arts colleges.  
Berry College the National Collegiate Athletic Association (NCAA) as a Division III School.  
The Gate of Opportunity Scholarship, a program that allows students to graduate debt free by working their way through school, was introduced in 2008.
- 2014** Berry College offers Bachelor of Science Nursing (B.S.N.) degree.
- 2015** Berry College's new Welcome Center opened in spring 2015.  
In September 2015, Valhalla Stadium, which includes Williams Field, Dickey Field and Clark Track opens, supporting intercollegiate football, lacrosse, track and field and intramurals.
- 2016** In the spring of 2016, the institution conducted its first full competitive season in outdoor track and field.
- 2018** Oak Hill, Christopher Browning Pavilion (indoor/outdoor venue) opened on May 19, 2018.
- 2020** The Betty Anne Rouse Bell Recital Hall at historic Ford Auditorium restoration and renovation completed.
- 2021** Berry College's new \$15.7 million state-of-the-art animal science building, funded entirely by donor support, opened its doors in October 2021. The 23,000-square-foot facility will enhance teaching and research in animal health and production, including genetics, microbiology and physiology.

Administrative Officers and Staff  
2022-2023

**President's Office**

Stephen R. Briggs, President  
Debbie Heida, Chief of Staff  
Jonathan Huggins, Chaplain  
Gabriel Marquez, Coordinator of Student Ministries  
Marc Hunsaker, Dean, Personal and Professional Development  
Mike Burnes, Director, LifeWorks Operations and Analytics  
Sue Dudt, Interim Director, Career Development  
Angel Mason, Director of Athletics

**Chief of Staff**

Casee Gilbert, Director of Hospitality and Event Services  
Rachel Taylor McLucas, Curator and Interim Director of Oak Hill and  
The Martha Berry Museum

**Academic Affairs**

David F. Slade, Interim Provost  
Casey Allan Dexter, Interim Dean of Academic Services  
Lauren Raymer Heller, Interim Assistant Provost for Teaching and Research  
Joyce Heames, Dean, Campbell School of Business  
Alan Hughes, Dean, Charter School of Education and Human Sciences  
Gabriel Barreneche, Dean, Evans School of Humanities, Arts and Social Sciences  
Alice Suroviec, Dean, School of Mathematical and Natural Sciences  
Tamikalon LyJeana Bond, Director of Berry College Child Development Center  
Lawrence Baines, Director, Teacher Education  
Laurie Chandler, Director, Bonner Center for Community Engagement  
Susan Conradsen, Director, Women's and Gender Studies  
Laura Taylor, Director, Research and Sponsored Programs  
Elizabeth Davis, Director, International Experiences  
Bryce E. Durbin, Registrar and Director of Institutional Research  
Carolyn Miller Reilly, Director, Division of Nursing  
Coleman Fannin, Co-Director, Honors Program  
Christina Lori Frederick, Director, Berry College Elementary and Middle School  
Melissa King, Director, The Writing Center  
Nancy Johnston Mercer, Assistant Dean and Director of M.B.A. Marketing and  
Admissions, Campbell School of Business  
Sarah Wells Kaufman, Associate Director of Academic Transitions  
Katrina Meehan, Associate Director, Accessibility Resources  
Robert Douglas Reimer, Director, Berry Center for Integrity and Leadership  
Anna Sharpe, Dean, Student Success

*Administrative Officers and Staff, 2022-2023 (Continued)*

**Advancement and Alumni**

Cynthia Inez Court, Vice President for Advancement  
Scott Breithaupt, Associate Vice President for Advancement  
Cecily Crow, Director, Alumni Relations  
Jean Druckenmiller, Assistant Vice President for Alumni Engagement and Development  
Brenda Jenkins, Director, Annual Giving  
Jennifer Schaknowski, Director, Alumni Engagement and Philanthropic Marketing  
Stacey Jones Spillers, Director, Foundation Relations and Strategic Partnerships  
Dawn Tolbert, Director, Advancement Communications  
Jennifer Fallon Wright, Director, Advancement Marketing Operations and Services

**Business Services and Finance**

Brian I. Erb, Vice President for Finance  
Drew Allison, Director, Enterprise Systems  
Ryan Matthew Chesley, Chief, Campus Police  
Dan Boyd, Director, Information Security  
Jeffrey Todd Bradford, Director, Physical Plant  
Leah Danielle Cobb, Director, Auxiliary Initiatives and Partnerships  
Amy Cornelieus, Director, User Support  
Eddie Elsberry, Director, Sustainability and Environmental Compliance  
Debbie Emory, Director, Auditing, Compliance, and Investment Services  
Penny Evans-Plants, Chief Information Officer  
Jason Murphine, Director, IT Infrastructure  
Kim Melton, Director, Budget and Student Financial Services  
Wayne Phipps, Director, Human Resources  
Danny Price, In-House Legal Counsel  
Brad T. Reeder, Assistant Vice President for Financial Services  
Zach Sherwin, Director, Enterprise Analytics  
Gary Will, Assistant Vice President for Campus Safety and Land Management

**Enrollment Management**

Andrew R. Bressette, Vice President, Enrollment Management  
Glenn Getchell, Director, Admissions  
Noemi Sarrion-Cortes, Director, Financial Aid  
Marcia McConnell, Director, New Student Financial Aid, Admissions  
Kinsey Stout, Director, Engagement and Experiential Marketing  
Amanda Swendsen, Director, Operations

*Administrative Officers and Staff, 2022-2023 (Continued)*

**Marketing and Communications**

Nancy Rewis, Vice President, Marketing and Communications  
Shannon Biggers, Director, Creative Services  
Cameron Jordan, Assistant Vice President for Marketing and Communications  
Chris Reynolds Kozelle, Director, Public Relations  
Brant Sanderlin, Director, Photography and Videography

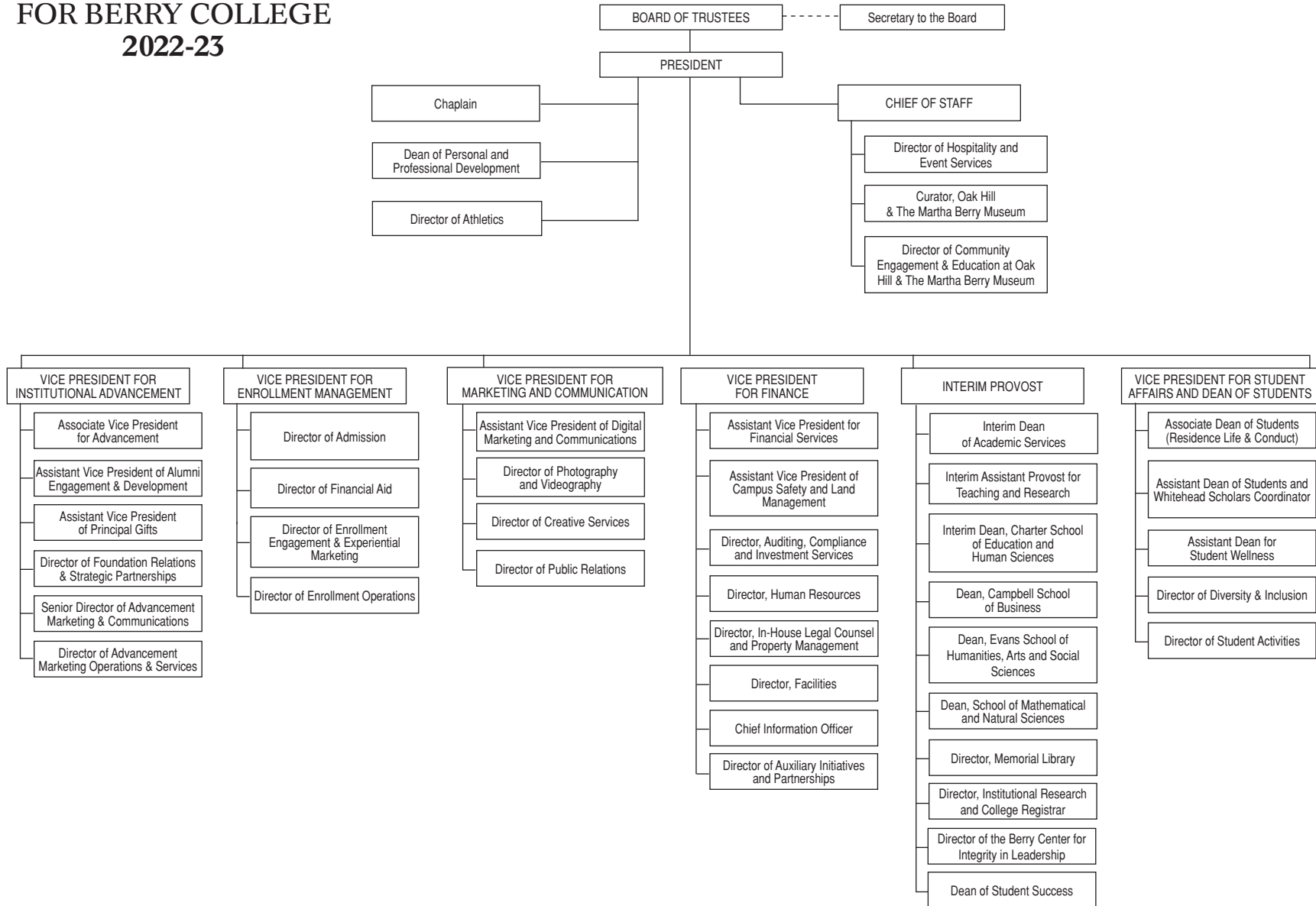
**Memorial Library**

Sherrie Lee Harrington, Director, Memorial Library  
Jeremy Worsham, Associate Director, Instruction Design and Technology Librarian

**Student Affairs**

Lindsey Taylor, Vice President for Student Affairs and Dean of Students  
David Eller, Director, Student Involvement  
Ashley Demonbreun-Chapman, Director, The BRAVE Project  
Meredith Johnson, Assistant Dean of Students and Whitehead Scholars Coordinator  
Michael McElveen, Assistant Dean of Student Wellness  
Victor Morales, Director, Recreation  
Lindsay Norman, Associate Dean of Students for Residence Life  
Becca Smith, Director, Counseling Center  
Haley Smith, Director, Diversity and Inclusion  
Lauren Wehunt, Director, Health Center

# ORGANIZATIONAL CHART FOR BERRY COLLEGE 2022-23



Degrees and Majors  
2022-2023

**Bachelor of Arts**

Art (*Art Education*<sup>2</sup>; *Art History*; *Studio Art*)  
 Communication (*Communication & Media Studies*;  
*Digital Storytelling*; *Filmmaking & Cinematic Arts*;  
*Public Relations*)  
 Creative Writing  
 Economics  
 English<sup>1</sup>  
 Environmental Studies (*Environmental Studies*)  
 French<sup>2</sup> (*French*; *French Studies*)  
 German<sup>2</sup> (*German*; *German Studies*)  
 History<sup>1</sup>  
 History Plus (*Enterprise*; *The Environment*; *Gender*;  
*Global Issues*; *Justice*; *The Public*; *Technology*; *Writing*)  
 Individually Designed  
 International Affairs  
 Music  
 Political Science  
 Psychology  
 Religion and Philosophy (*Biblical & Christian Studies*;  
*Ethics & Value Theory*; *Philosophy*; *Religious Studies*)  
 Sociology and Anthropology (*Anthropology*; *Sociology*)  
 Spanish<sup>2</sup>  
 Theatre

**Bachelor of Music**

Music Education<sup>2</sup>  
 Music Performance  
 Music with Elective Studies in Business

**Bachelor of Science**

Accounting  
 Animal Science (*Pre-Vet/Pre-Professional Science*;  
*Pre-Production/ Management*)  
 Applied Physics  
 Biochemistry  
 Biology<sup>1</sup> (*Cellular and Biomedical*; *Integrative Biology*;  
*Wildlife, Ecology, and Conservation*)  
 Chemistry<sup>1</sup>  
 Computer Science  
 Creative Technologies  
 Data Analytics  
 Economics

**Other: Bachelor of Science 3-2 Programs**

Dual-Degree Astronomy with University of Hawaii at Hilo  
 Dual-Degree Engineering program with Georgia Institute of Technology  
 Dual-Degree Engineering program with Kennesaw State University

**Bachelor of Science (Continued)**

Elementary Education (P-5)  
 Environmental Science  
 Environmental Studies (*Environmental*  
*Policy Studies*)  
 Exercise Science  
 Finance  
 Individually Designed  
 International Business (Dual Major)  
 Management  
 Marketing  
 Mathematics<sup>1</sup> (*Mathematics*;  
*Mathematics Education*<sup>1</sup>)  
 Middle-Grades Education (4-8)  
 Physics<sup>1</sup> (*General Physics*; *Professional Track*)  
 Political Science<sup>1</sup>  
 Psychology  
 Secondary Education (Dual Major)  
 Sociology and Anthropology (*Anthropology*;  
*Sociology*)  
 Sports Administration

**Bachelor of Science Nursing**

Nursing

**Master of Business Administration**

General Business

**Master of Arts in Teaching**

Early Childhood Education  
 Middle-Grades Education  
 Secondary Education (P-12)

**Master of Education**

Curriculum and Instruction  
 Early Childhood Education  
 Educational Leadership  
 Middle-Grades Education  
 Reading

**Education Specialist**

Curriculum and Instruction  
 Educational Leadership

<sup>1</sup>Teacher certification available at secondary level if combined with secondary education major.

<sup>2</sup>Teacher certification, grades P-12 if combined with secondary education major.

Undergraduate Minors  
2022-2023

Animal Science	German
Anthropology	History
Applied Behavior Analysis	International Affairs
Art	Latin American and Caribbean Studies
Biology	Legal Studies
Business	Mathematics
Chemistry	Music
Communication Studies	Musical Theatre
Computer Science	One Health Science
Creative Technologies	Philosophy
Creative Writing	Physics
Dance	Political Science
Data Analytics	Psychology
Digital Storytelling	Public Relations
Economics	Religion
English	Social Entrepreneurship
Entrepreneurship and Innovation	Sociology
Environmental Science	Spanish
Environmental Studies	Strength and Conditioning
Family Studies	Teaching English as a Foreign Language
French	Theatre
Geology	Women's and Gender Studies

Source of data: *Berry College Undergraduate Catalog, 2022-2023*

## Section II

### Student Information



Comparative Enrollment Statistics  
2021-2022 through 2022-2023

Student Category	Graduate						Undergraduate						Total					
	SUMMER		FALL		SPRING		SUMMER		FALL		SPRING		SUMMER		FALL		SPRING	
	2021	2022	2021	2022	2022	2023	2021	2022	2021 <sup>a</sup>	2022 <sup>b</sup>	2022	2023	2021	2022	2021	2022	2022	2023
<b>FULL TIME</b>	41	37	56	40	35	13	16	18	2,157	2,221	2,027	2,099	57	55	2,213	2,261	2,062	2,112
Men	6	8	13	11	9	7	6	7	781	817	728	766	12	15	794	828	737	773
Women	35	29	43	29	26	6	10	11	1,376	1,404	1,299	1,333	45	40	1,419	1,433	1,325	1,339
<b>PART TIME</b>	99	96	75	77	101	84	451	515	20	29	34	32	550	611	95	106	135	116
Men	32	27	23	24	28	27	151	159	9	11	14	14	183	186	32	35	42	41
Women	67	69	52	53	73	57	300	356	11	18	20	18	367	425	63	71	93	75
<b>TOTAL</b>	140	133	131	117	136	97	467	533	2,177	2,250	2,061	2,131	607	666	2,308	2,367	2,197	2,228
Men	38	35	36	35	37	34	157	166	790	828	742	780	195	201	826	863	779	814
Women	102	98	95	82	99	63	310	367	1,387	1,422	1,319	1,351	412	465	1,482	1,504	1,418	1,414
<b>FULL-TIME EQUIVALENT</b>	91.3	84.8	105.4	93.1	103.6	69.7	185.7	216.2	2,166.2	2,235.7	2,042.0	2,113.7	277.0	300.9	2,271.6	2,328.8	2,145.6	2,183.3

<sup>a</sup> Fall 2021 undergraduate includes five part-time exclusively auditing courses, not reported to IPEDS.

<sup>b</sup> Fall 2022 undergraduate includes seven part-time exclusively auditing courses, not reported to IPEDS.

Source of data: Registrar's Enrollment Report

Historical Enrollment  
Undergraduate and Graduate  
1989-90 to 2022-23

Year	Fall						Spring					
	Undergraduate		Graduate		Total		Undergraduate		Graduate		Total	
	Headcount	FTE	Headcount	FTE	Headcount	FTE	Headcount	FTE	Headcount	FTE	Headcount	FTE
1989-90	1,714	1,680.0	110	48.0	1,824	1,728.0	1,580	1,547	135	69	1,715	1,616.0
1990-91	1,683	1,651.0	122	52.0	1,805	1,703.0	1,528	1,504	148	70	1,676	1,574.0
1991-92	1,609	1,583.0	131	68.0	1,740	1,651.0	1,471	1,450	141	76	1,612	1,526.0
1992-93	1,628	1,605.0	117	46.0	1,628	1,605.0	1,528	1,507	141	76	1,644	1,566.0
1993-94	1,675	1,648.0	113	45.0	1,788	1,693.0	1,509	1,482	164	73	1,673	1,555.0
1994-95	1,725	1,705.0	151	79.0	1,876	1,784.0	1,598	1,573	181	99	1,779	1,672.0
1995-96	1,756	1,733.0	218	108.0	1,974	1,841.0	1,621	1,594	230	126	1,851	1,720.0
1996-97	1,855	1,826.0	218	118.0	2,085	1,948.0	1,716	1,679	227	114	1,943	1,793.0
1997-98	1,876	1,854.0	195	96.0	2,071	1,950.0	1,763	1,740	169	82	1,932	1,822.0
1998-99	1,942	1,917.0	169	67.0	2,111	1,984.0	1,817	1,784	152	88	1,969	1,872.0
1999-00	1,899	1,884.0	190	73.0	2,089	1,957.0	1,779	1,781	178	76	1,957	1,857.0
2000-01	1,825	1,796.0	208	109.0	1,846	1,822.0	1,716	1,695	177	105	1,893	1,800.0
2001-02	1,846	1,822.0	192	105.0	2,053	1,927.0	1,739	1,712	180	107	1,919	1,819.0
2002-03	1,898	1,878.0	155	89.0	2,053	1,967.0	1,770	1,749	160	92	1,930	1,841.0
2003-04	1,895	1,874.0	150	84.0	2,045	1,958.0	1,775	1,750	157	96	1,932	1,846.0
2004-05	1,878	1,851.0	130	76.0	2,008	1,927.0	1,759	1,729	127	76	1,886	1,805.0
2005-06	1,864	1,846.0	107	69.0	1,971	1,915.0	1,729	1,712	140	81	1,869	1,793.0
2006-07	1,718	1,697.0	124	72.0	1,842	1,769.0	1,600	1,581	122	77	1,722	1,658.0
2007-08	1,737	1,714.0	121	75.0	1,858	1,789.0	1,616	1,597	104	62	1,720	1,659.0
2008-09	1,686	1,667.0	109	71.0	1,795	1,738.0	1,581	1,559	130	82	1,711	1,641.0
2009-10	1,777	1,753.0	145	91.0	1,922	1,844.0	1,678	1,652	138	86	1,816	1,738.0
2010-11	1,928	1,903.0	159	106.0	2,087	2,009.0	1,792	1,774	145	96	1,937	1,870.0
2011-12	1,944	1,927.0	149	100.0	2,093	2,027.0	1,816	1,804	144	108	1,960	1,912.0
2012-13	2,041	2,021.0	125	80.0	2,166	2,101.0	1,946	1,923	114	78	2,060	2,000.0
2013-14	2,141	2,121.0	82	58.0	2,223	2,180.0	2,023	2,003	104	71	2,127	2,074.0
2014-15	2,085	2,070.8	92	91.0	2,177	2,134.2	1,969	1,950	123	82	2,092	2,032.0
2015-16	2,123	2,095.7	122	97.0	2,245	2,192.7	2,034	2,005	146	112	2,180	2,117.7
2016-17	2,073	2,058.6	101	78.7	2,174	2,137.3	1,960	1,946	101	76	2,061	2,021.1
2017-18	1,978	1,960.1	132	95.6	2,110	2,055.6	1,886	1,866	117	101	2,003	1,966.9
2018-19	1,936	1,917.5	78	60.8	2,014	1,978.3	1,871	1,838	105	77	1,976	1,914.9
2019-20	1,943	1,923.7	91	71.3	2,034	1,995.0	1,867	1,838	115	93	1,982	1,931.0
2020-21	2,006	1,992.1	119	96.7	2,125	2,088.8	1,927	1,910	118	96	2,045	2,005.7
2021-22	2,177	2,166.2	131	105.4	2,308	2,271.6	2,061	2,042	136	104	2,197	2,145.6
2022-23	2,250	2,235.7	117	93.1	2,367	2,328.8	2,131	2,114	97	70	2,228	2,183.3

Source of data: Registrar's Enrollment Report to President (Fall and Spring semesters)

Undergraduate Program Enrollment History by Schools  
and Undeclared Majors<sup>1</sup>  
2018-2019 Through 2022-2023

Term	Campbell School of Business <sup>2</sup>	Charter School of Education and Human Sciences <sup>3</sup>	Evans School of Humanities, Arts, and Social Sciences	School of Mathematics and Natural Sciences	Individually Designed	Undeclared	TOTAL
Summer 2018*	62	190	85	131	2	8	478
Fall 2018	337	518	401	575	2	86	1,919
Spring 2019	354 753	525 1,233	410 896	516 1,222	2 6	30 124	1,837 4,234
Summer 2019*	81	164	85	117	1	4	452
Fall 2019	334	494	396	625	1	72	1,922
Spring 2020	332 747	488 1,146	385 866	574 1,316	1 3	58 134	1,838 4,212
Summer 2020*	92	156	97	114	0	12	471
Fall 2020	343	521	402	640	0	89	1,995
Spring 2021	362 797	519 1,196	397 896	587 1,341	0 0	48 149	1,913 4,379
Summer 2021*	87	147	79	138	0	16	467
Fall 2021	347	567	425	716	1	117	2,173
Spring 2022	366 800	541 1,255	447 951	645 1,499	3 4	55 188	2,057 4,697
Summer 2022*	106	164	99	155	0	10	534
Fall 2022	377	558	435	725	2	146	2,243
Spring 2023	395 878	537 1,259	440 974	673 1,553	2 4	74 230	2,121 4,898
<i>Percent Increase/ Decrease Since:</i>							
<b>Fall 2021</b>	<b>8.6%</b>	<b>-1.6%</b>	<b>2.4%</b>	<b>1.3%</b>	<b>100.0%</b>	<b>24.8%</b>	<b>3.2%</b>
<b>2021-2022</b>	<b>9.7%</b>	<b>0.3%</b>	<b>2.4%</b>	<b>3.6%</b>	<b>0.0%</b>	<b>22.3%</b>	<b>4.3%</b>

<sup>1</sup>Does not include students in joint enrollment, nondegree seeking majors, second or third majors, and co-op program.

<sup>2</sup>Prebusiness undeclared students are included in the Campbell School of Business.

\*Summer semester include more than one block of classes.

Source of data: Registrar's database-major/minor report; and Analysis of Majors and Minors compiled by Institutional Research

Graduate Program Enrollment History  
2012-2013 Through 2022-2023

<b>Term</b>	<b>M.B.A.</b>		<b>M.A.T.</b>		<b>M.Ed.</b>		<b>Ed.S.</b>		<b>TOTAL</b>	
Summer 2012	17		14		32		45		108	
Fall 2012	27		23		30		45		125	
Spring 2013	28	72	24	61	27	89	35	125	114	347
Summer 2013	18		19		20		18		75	
Fall 2013	24		25		14		19		82	
Spring 2014	23	65	25	69	11	45	45	82	104	261
Summer 2014	13		14		6		28		61	
Fall 2014	23		22		9		38		92	
Spring 2015	22	58	20	56	8	23	73	139	123	276
Summer 2015	13		10		4		82		109	
Fall 2015	23		10		11		78		122	
Spring 2016	21	57	8	28	10	25	107	267	146	377
Summer 2016	14		4		14		52		84	
Fall 2016	23		4		6		68		101	
Spring 2017	22	59	5	13	0	20	74	194	101	286
Summer 2017	16		0		2		111		129	
Fall 2017	30		0		0		102		132	
Spring 2018	32	78	0	0	8	10	77	290	117	378
Summer 2018	26		0		31		72		129	
Fall 2018	41		0		26		11		78	
Spring 2019	41	108	0	0	44	101	20	103	105	312
Summer 2019	27		0		51		51		129	
Fall 2019	38		0		26		27		91	
Spring 2020	42	107	0	0	24	101	49	127	115	335
Summer 2020	24		0		30		76		130	
Fall 2020	46		0		15		58		119	
Spring 2021	43	113	0	0	14	59	61	195	118	367
Summer 2021	37		0		29		74		140	
Fall 2021	53		0		16		62		131	
Spring 2022	51	141	0	0	17	62	68	204	136	407
Summer 2022	29		0		29		75		133	
Fall 2022	44		0		14		59		117	
Spring 2023	46	119	0	0	9	52	42	176	97	347
<i>Percent Increase/ Decrease Since 2021-2022</i>	<i>-15.6%</i>		<i>N/A</i>		<i>-16.1%</i>		<i>-13.7%</i>		<i>-14.7%</i>	

Source of data: Registrar

Geographic Distribution of **Total Enrollment**

Fall 2017 through Fall 2022

As of August 30, 2022

Area	Percent of <i>Total</i> Students					
	2017	2018	2019	2020	2021	2022
New England	0.4	0.4	0.4	0.5	0.6	0.6
Middle Atlantic	2.0	1.8	1.5	1.4	1.4	1.5
Southeast	81.0	80.6	81.4	83.1	83.2	83.9
North Central	1.8	1.8	1.6	1.6	2.0	2.2
South Central	12.9	13.5	13.0	11.7	11.3	10.1
Western	0.8	0.7	0.7	0.7	0.9	1.1
Guam	0.0	0.0	0.0	0.0	0.0	0.0
Puerto Rico & Virgin Islands	0.0	0.0	0.0	0.0	0.1	0.1
Other (U.S. citizens living abroad) <sup>a</sup>	0.2	0.2	0.2	0.2	0.1	0.1
International <sup>b</sup>	0.7	0.8	1.1	0.8	0.4	0.4
Georgia	68.5	67.7	70.2	73.0	73.5	75.3
<i>(Floyd County)</i>	7.0	8.3	8.8	9.7	8.2	8.5
<i>(Atlanta Area) <sup>c</sup></i>	24.6	23.7	24.8	26.2	23.8	25.7
Alabama <sup>d</sup>	4.6	4.0	4.0	3.3	3.2	3.1
Florida <sup>d</sup>	6.8	7.0	6.3	5.0	4.7	4.1
North Carolina <sup>d</sup>	3.6	3.3	2.6	2.4	2.6	2.2
South Carolina <sup>d</sup>	1.1	1.3	1.4	1.5	1.5	1.4
Tennessee <sup>d</sup>	6.5	7.1	6.7	6.2	5.7	4.9
Other States <sup>e</sup>	8.0	8.5	7.4	7.5	8.1	8.4

<sup>a</sup>Other (United States citizens living abroad) include United States citizens from military bases abroad, missionaries abroad, etc.

<sup>b</sup>The registrar's geographic distribution report is used to calculate the percentages for this table.

International students "Citizen of" students (defined by IPEDS as Nonresident Aliens) listing their Berry addresses and other U.S. addresses have been regrouped with their "Citizen of" address.

NOTE: The percentage of Berry's *undergraduate* enrollment who represent the *undergraduate* international population (Nonresident Aliens "citizen of") were 2017, 0.7; 2018, 0.8; 2019, 1.1; 2020, 0.8; 2021, 0.4; and 2022, 0.4.

<sup>c</sup>Atlanta Area includes Clayton, Cobb, DeKalb, Douglas, Fayette, Fulton, and Gwinnett Counties.

<sup>d</sup>Contiguous states; also the largest in terms of out-of-state enrollment.

<sup>e</sup>Other states exclude Alabama, Florida, Georgia, North Carolina, South Carolina, Tennessee, United States Citizens living abroad, and International Students.

Source of data: Institutional Research; Registrar

*Total Undergraduate Enrollment by Ethnic Classification*  
Fall 2006 through Fall 2022

Year	Nonresident Alien (International)	American Indian or Alaska Native	Asian	Asian or Pacific Islander	Black or African American	Hispanics of Any Race	Native Hawaiian or Other Pacific Islander	Two or More Races	Total Students of Color <sup>1</sup>	White	Race and Ethnicity Unknown	Total Undergraduates
2006	39	2	N/A	28	54	35	N/A	N/A	119	1,534	25	1,717
2007	37	3	N/A	28	57	40	N/A	N/A	128	1,542	30	1,737
2008	38	4	N/A	27	76	41	N/A	N/A	148	1,457	43	1,686
2009	31	3	N/A	38	86	60	N/A	N/A	187	1,481	78	1,777
2010	31	3	42	N/A	95	77	0	13	217	1,606	61	1,915
2011	26	3	42	N/A	92	91	1	20	249	1,617	52	1,944
2012	23	5	34	N/A	85	107	2	40	273	1,697	48	2,041
2013	19	4	23	N/A	84	123	2	56	292	1,798	32	2,141
2014	19	2	26	N/A	90	132	3	58	311	1,726	29	2,085
2015	16	5	30	N/A	98	137	1	68	339	1,715	53	2,123
2016	13	6	27	N/A	91	135	0	66	325	1,672	63	2,073
2017	15	5	41	N/A	101	130	1	66	344	1,574	45	1,978
2018	16	7	36	N/A	107	134	1	69	354	1,522	44	1,936
2019	22	7	42	N/A	136	132	0	76	393	1,512	16	1,943
2020	16	5	50	N/A	148	160	0	106	469	1,512	9	2,006
2021 <sup>a</sup>	9	7	57	N/A	176	194	0	99	533	1,621	9	2,172
2022 <sup>b</sup>	10	5	65	N/A	182	232	2	106	592	1,629	12	2,243

<sup>1</sup>Total students of color includes American Indian or Alaska Native; Asian or Pacific Islander; Black, non-Hispanic; Hispanic; for 2007 through 2009.

IPEDS revised ethnicity and race categories beginning with 2010. Total students of color includes American Indian or Alaska Native; Asian; Black or African American; Hispanics of Any Race; Native Hawaiian or Other Pacific Islander; and two or more races.

<sup>a</sup>Five students exclusively auditing courses are excluded from the undergraduate enrollment, based on IPEDS reporting procedures.

<sup>b</sup>Seven students exclusively auditing courses are excluded from the undergraduate enrollment, based on IPEDS reporting procedures.

Source of data: IPEDS Fall Enrollment Report

*Total Graduate Enrollment by Ethnic Classification*  
Fall 2006 through Fall 2022

Year	Nonresident Alien (International)	American Indian or Alaska Native	Asian	Asian or Pacific Islander	Black or African American	Hispanics of Any Race	Native Hawaiian or Other Pacific Islander	Two or More Races	Total Students of Color <sup>1</sup>	White Non- Hispanic	Race Unknown	Total Graduates
2006	3	0	N/A	1	1	2	N/A	N/A	4	115	2	124
2007	5	0	N/A	0	3	2	N/A	N/A	5	110	1	121
2008	7	0	N/A	0	3	3	N/A	N/A	6	96	0	109
2009	2	0	N/A	0	6	4	N/A	N/A	10	132	1	145
2010	1	1	0	N/A	6	3	0	2	12	144	2	159
2011	1	1	1	N/A	7	2	0	0	11	130	7	149
2012	1	1	1	N/A	4	2	0	0	8	109	7	125
2013	1	0	0	N/A	6	1	0	1	8	70	3	82
2014	0	0	0	N/A	3	2	0	4	9	80	3	92
2015	0	0	0	N/A	15	4	0	1	20	98	4	122
2016	0	0	0	N/A	19	5	0	0	24	76	1	101
2017	0	0	0	N/A	20	3	0	0	23	104	5	132
2018	0	0	1	N/A	6	4	0	0	11	67	0	78
2019	1	0	0	N/A	5	2	0	4	11	79	0	91
2020	0	0	2	N/A	18	3	0	4	27	89	3	119
2021	1	0	3	N/A	33	7	0	3	46	80	4	131
2022	0	0	2	N/A	20	7	0	2	31	83	3	117

<sup>1</sup>Total students of color includes American Indian or Alaska Native; Asian or Pacific Islander; Black, non-Hispanic; Hispanic; for 2007 through 2009.

IPEDS revised ethnicity and race categories beginning with 2010. Total students of color includes American Indian or Alaska Native; Asian;

Black or African American; Hispanics of Any Race; Native Hawaiian or Other Pacific Islander; and two or more races.

Source of data: IPEDS Fall Enrollment Report

*Undergraduate* Enrollment Analysis  
of Other Countries Represented<sup>1</sup>  
2022-2023

Country	Number of <i>Undergraduate</i> Students 2022-2023	
	Nonresident Aliens	Resident Alien
Albania		1
Costa Rica	4	
Denmark	1	
El Salvador		1
Haiti	1	1
India		1
Korea, Democratic People's Republic of		1
Mexico		1
Myanmar		4
Nepal	1	
Nicaragua	1	
Philippines		1
Russian Federation	1	
South Africa		3
Switzerland	1	
United Kingdom of Great Britain and Northern Ireland		1
Number of international students:	10	15
Number of countries represented:	7	10

\*Unduplicated head count for academic year.

<sup>1</sup>"Citizen of" (Nonresident Alien) or "Country of Origin" (Resident Alien), and "ethnicity" category in Jenzabar database

<sup>2</sup>Nonresident Alien exchange students enrolled for both fall and spring semesters.

Source of data: Registrar's geographic enrollment report



*Graduate* Enrollment Analysis  
of Other Countries Represented<sup>1</sup>  
2022-2023

Country	Number of <i>Graduate</i> Students 2022-2023*	
	Nonresident Alien	Resident Alien
Italy	0	1
United Kingdom of Great Britian and Northern Ireland	0	1
Number of international students:	0	2
Number of countries represented:	0	2

\*Unduplicated head count for academic year.

<sup>1</sup>"Citizen of" (Nonresident Alien) or "Country of Origin" (Resident Alien), and "ethnicity" category in Jenzabar database

Source of data: Registrar's geographic enrollment report

SAT/ACT Scores of Entering First-Year Students  
Fall 2017 through Fall 2022

Score Range	Fall-Semester Percentage						Change in Percentage Points		Change in Percentage Points	
	2017	2018 <sup>a</sup>	2019	2020 <sup>b</sup>	2021	2022	↑ ↓ Since 2017	↑ ↓ Since 2021		
SAT										
≥ 1270	29.6	36.1	32.6	21.1	35.2	29.1	↓ 0.5	↓ <b>6.1</b>		
≥ 1180	62.5	60.1	57.0	48.3	61.5	59.7	↓ 2.8	↓ <b>1.8</b>		
≥ 1100	83.3	83.7	79.7	73.5	82.4	82.1	↓ 1.2	↓ <b>0.3</b>		
ACT Composite										
≥ 29	29.5	30.1	38.9	32.3	39.0	27.0	↓ 2.5	↓ <b>12.0</b>		
≥ 26	58.3	56.2	66.6	60.6	65.7	51.8	↓ 6.5	↓ <b>13.9</b>		
≥ 23	86.9	79.3	87.0	83.7	84.9	73.0	↓ 13.9	↓ <b>11.9</b>		

<sup>a</sup> SAT05 scores converted to new SAT16 scale.

<sup>b</sup> Beginning in fall 2020, test scores were no longer required but were considered if submitted.

Source of data: Admissions

High School GPA of Entering First-Year Students  
Fall 2017 through Fall 2022

Score Range	Fall-Semester Percentage						Change in Percentage Points	Change in Percentage Points
	2017	2018	2019	2020	2021	2022	↑ ↓ Since 2017	↑ ↓ Since 2021
≥ 3.5+	N/A	N/A	N/A	70.4	80.0	78.2	N/A	↓ <b>1.8</b>
≥ 3.0+	N/A	N/A	N/A	94.5	97.0	98.6	N/A	↑ <b>1.6</b>
≥ 2.5+	N/A	N/A	N/A	99.5	99.0	99.7	N/A	↑ <b>0.5</b>
≥ 3.5-4.0	70.1	71.1	69.7	N/A	N/A	N/A	N/A	N/A
≥ 3.0-4.0	95.3	93.9	93.6	N/A	N/A	N/A	N/A	N/A
≥ 2.5-4.0	99.6	98.4	99.5	N/A	N/A	N/A	N/A	N/A

Source of data: Admissions

This page intentionally left blank.

**Fall—First-Year Students<sup>1</sup>**  
 Berry College Retention and Graduation Rates  
*Official Date: Retained as of August 30, 2022*  
*Graduated as of August 4, 2023*

First-Year Students Entered (Fall)		Number/Percent Retained										Number/Percent Graduated <sup>2</sup>							
		Second Year		Third Year		Fourth Year		Fifth Year		Sixth Year		≤ Four Years		≤ Five Years		≤ Six Years		To Date	
Year	No.	No.	%	No.	%	No.	%	No.	%	No.	%	No.	%	No.	%	No.	%	No.	%
2001	538	423	79	345	64	313	58	46	9	2	.4	274	51	325	60	<b>329</b>	<b>61</b>	332	62
2002	566	429	76	369	65	335	59	56	10	3	1	280	50	339	60	<b>342</b>	<b>60</b>	344	61
2003	505	388	77	323	64	301	60	52	10	3	.6	240	48	292	58	<b>299</b>	<b>59</b>	300	59
2004	514	403	78	332	65	306	60	44	9	4	1	262	51	305	59	<b>309</b>	<b>60</b>	313	61
2005	513	386	75	318	62	290	57	53	10	3	1	226	44	284	55	<b>291</b>	<b>57</b>	293	57
2006	428	325	76	286	69	264	62	40	9	4	1	221	52	259	61	<b>264</b>	<b>62</b>	266	62
2007	537	417	78	343	64	313	58	46	9	5	1	269	50	313	58	<b>323</b>	<b>60</b>	325	61
2008	448	333	74	290	65	266	59	24	5	3	1	243	54	273	61	276	62	278	62
2009	569	443	78	387	68	355	62	28	5	2	.4	315	55	360	63	362	64	364	64
2010	653	515	79	451	69	414	63	34	5	2	.3	386	59	423	65	428	66	429	66
2011	557	420	75	371	67	346	62	31	6	1	.2	319	57	353	63	357	64	357	64
2012	618	491	79	434	70	402	65	33	5	4	.6	373	60	403	65	409	66	409	66
2013	672 *	531	79	478	71	441	66	30	4	3	.4	422	63	456	68	466	69	467	70
2014	568 * <sup>a</sup>	473	83	426	75	389	68	33	6	1	.2	357	63	389	69	399	70	400	71
2015	575 *	487	85	429	75	402	70	25	4	4	1	380	66	406	71	415	72	416	73
2016	534 * <sup>b</sup>	418	78	358	67	334	63	18	3	0	0	325	61	344	65	345	65	347	65.1
2017	553 * <sup>c</sup>	464	84	422	76	383	69	26	5	2	.4	374	68	400	72	408	74		
2018	509 *	424	83	372	73	337	66	27	5			319	63	348	69				
2019	577	486	84	435	75	387	67					377	65						
2020	619 *	525	85	466	75							30	5						
2021	729 <sup>d</sup>	606	83									4	1						
2022	634																		

Source of data: Institutional Research; Registrar

\*IPEDS Exclusions to select cohorts due to student deaths (FA13, FA14, FA15, FA16, FA17, FA18, and FA20). Adjustments have been made to retention and graduation rates based on the term of students' death (adjustments in italics in table above).

<sup>1</sup>Includes students entering in the fall semester who may bring with them some credit hours gained from AP credit, CLEP, or Joint Enrollment.

<sup>2</sup>Retention calculations include students who withdraw to complete dual-degree nursing or engineering degrees. Students who graduate from these dual-degree programs are included in the graduation rates for their cohort.

<sup>a</sup>Fall 2014 Cohort: Sixth-year graduation rates updated to include two students who graduated but were not on the original graduation list.

<sup>b</sup>Fall 2016 sixth-year graduation rate updated on January 19, 2023, due to one student degree conferred date changing to December 2022.

<sup>c</sup>Fall 2017 fifth-year graduation rate updated on January 19, 2023, due to one student degree conferred date changing to December 2022.

<sup>d</sup>Fall 2021 cohort is the largest first-time, first-year entering class in Berry College's history.

Transfer Students  
 Berry College Retention and Graduation Rates  
*Official Date: Retained as of August 30, 2022*  
*Graduated as of August 4, 2023*

Transfer Students Entered (Fall)		Number/Percent Retained								Number/Percent Graduated <sup>1</sup>									
		Second Year		Third Year		Fourth Year		Fifth Year		≤ Two Years		≤ Three Years		≤ Four Years		≤ Five Years		To Date	
Year	No.	No.	%	No.	%	No.	%	No.	%	No.	%	No.	%	No.	%	No.	%	No.	%
2001	72	53	74	32	44	5	7	1	1	19	26	<b>45</b>	<b>63</b>	48	67	50	69	50	69
2002	72	55	76	32	44	8	11	0	0	14	19	<b>36</b>	<b>50</b>	44	61	44	61	44	61
2003	70	54	77	34	49	9	13	0	0	13	19	<b>35</b>	<b>50</b>	44	63	46	66	47	67
2004	66	53	80	32	48	5	8	2	3	16	24	<b>40</b>	<b>61</b>	47	71	49	74	49	74
2005	69	45	65	34	49	8	12	1	1	11	16	<b>33</b>	<b>48</b>	42	61	44	64	44	64
2006	56	44	79	30	54	9	16	2	4	9	16	<b>28</b>	<b>50</b>	40	71	41	73	41	73
2007	44	35	80	27	61	11	25	2	5	5	11	<b>23</b>	<b>52</b>	32	73	32	73	33	75
2008	63	48	76	32	51	8	13	1	2	10	21	<b>27</b>	<b>43</b>	34	54	34	54	36	57
2009	53	39	74	31	58	4	8	2	4	4	8	<b>29</b>	<b>55</b>	38	72	40	75	40	75
2010	41	28	68	24	59	4	10	1	2	4	10	<b>28</b>	<b>68</b>	31	76	31	76	32	78
2011	46	32	70	22	48	7	15	0	0	6	13	<b>22</b>	<b>48</b>	29	63	29	63	29	63
2012	39	29	74	25	64	5	13	0	0	4	10	<b>22</b>	<b>56</b>	27	69	28	72	28	72
2013	40	31	78	19	48	3	8	0	0	10	25	<b>27</b>	<b>68</b>	30	75	30	75	30	75
2014	37	29	78	24	65	4	11	1	3	4	11	<b>23</b>	<b>62</b>	26	70	27	73	27	73
2015	39	33	85	23	59	5	13	0	0	7	18	<b>23</b>	<b>59</b>	28	72	28	72	28	72
2016	39	29	74	19	49	5	13	0	0	10	26	<b>24</b>	<b>62</b>	29	74	29	74	29	74
2017	42	33	79	22	52	4	10	0	0	8	19	<b>26</b>	<b>62</b>	30	71	30	71	30	71
2018	46	40	87	21	46	4	9	0	0	15	33	<b>32</b>	<b>70</b>	36	78	36	78		
2019	35	22	63	12	34	5	14			7	20	<b>13</b>	<b>37</b>	17	49				
2020	28	25	89	25	89					7	25	<b>17</b>	<b>61</b>						
2021	32	27	84							7	22								
2022	24																		

<sup>1</sup>Retention calculations include students who withdrew to complete dual-degree nursing or engineering degrees (specific cases are included in footnotes below). Students who graduate from these dual-degree programs are included in the graduation rates for their cohort.

Source of data: Institutional Research; Registrar

Age Distribution of  
Undergraduate Students  
As of August 30, 2022

Age	Percentage of		
	Men (N=828)	Women (N=1,422)	All Students (N=2,250)
17-18	11.1	12.9	12.2
19	28.5	27.6	28.0
20	24.8	25.0	24.9
21	21.5	21.7	21.6
22	10.7	10.8	10.8
23-24	2.5	1.5	1.9
25-29	0.2	0.1	0.2
30-34	0.1	0.0	0.0
35-39	0.1	0.1	0.1
40-44	0.0	0.1	0.0
45+	0.4	0.2	0.3
<b>Total</b>	<b>100.0</b>	<b>100.0</b>	<b>100.0</b>

Average age of all undergraduate = 20

Source of data: Registrar's database

Age Distribution of  
Graduate Students  
As of August 30, 2022

Age	Percentage of		
	Men (N=35)	Women (N=82)	All Graduate Students (N=117)
21-25	37.1	22.0	26.5
26-30	17.1	17.1	17.1
31-35	8.6	14.6	12.8
36-40	2.9	14.6	11.1
41-45	20.0	15.9	17.1
46-50	5.7	8.5	7.7
51+	8.6	7.3	7.7
Total	100.0	100.0	100.0

Average age of all graduate = 35

Source of data: Registrar's database



### Section III

#### Academic Profile

Number of Undergraduate Majors by Schools  
Spring 2018 Through Spring 2023

School	Number of Spring Majors (1st, 2nd, 3rd, and 4th)					
	2018	2019	2020	2021	2022	2023
Campbell School of Business	416	428	391	430	453	500
Charter School of Education and Human Sciences	589	582	538	580	613	606
Evans School of Humanities, Arts, and Social Sciences	496	494	464	480	519	516
School of Mathematical and Natural Sciences	555	536	599	622	688	738
Individually Designed*	5	3	2	1	3	2

\*Individually designed majors are reported separately from schools.

Source of data: Institutional Research and Registrar

Summary of Undergraduate Majors and Minors by Schools  
Official Counting Date: April 3, 2023

School	Majors					Minors
	First	Second	Third	Fourth	Total	
Campbell School of Business	395	102	3	0	500	191
Charter School of Education and Human Sciences	537	69	0	0	606	213
Evans School of Humanities, Arts, and Social Sciences	440	76	0	0	516	348
School of Mathematical and Natural Sciences	673	65	0	0	738	387
Individually Designed*	2	0	0	0	2	0
Women's Studies*	0	0	0	0	0	23
<b>Total</b>	<b>2,047</b>	<b>312</b>	<b>3</b>	<b>0</b>	<b>2,362</b>	<b>1,162</b>

\*Individually designed majors and women's studies minors are reported separately from schools.

Source of data: Institutional Research and Registrar

Number of Undergraduate Majors in Rank Order  
Official Counting Date: April 3, 2023

Rank	Major/Concentration	Number of (1st, 2nd, and 3rd)	
		Concentrations	Majors
1.	Animal Science		213
	<i>Animal Science (no concentration)</i>	5	
	<i>Pre-Vet/Pre-Professional Science</i>	169	
	<i>Production/Management</i>	39	
2.	Biology		175
	<i>Biology (no concentration)</i>	5	
	<i>Concentration I</i>	7	
	<i>Cellular and Biomedical</i>	100	
	<i>Integrative Biology</i>	22	
	<i>Wildlife, Ecology, and Conservation</i>	41	
3.	Psychology		169
4.	Exercise Science		142
	<i>Exercise Science (no concentration)</i>	60	
	<i>Allied Health Pre-professional</i>	68	
	<i>Clinical/Research</i>	2	
	<i>Strength and Conditioning</i>	12	
5.	Communication		122
	<i>Communication (no concentration)</i>	10	
	<i>Communication and Media Studies</i>	1	
	<i>Digital Storytelling</i>	27	
	<i>Filmmaking/Cinematic Arts</i>	24	
	<i>Public Relations</i>	51	
	<i>Sports Communication</i>	8	
	<i>Visual Communication</i>	1	
6.	Management		101
7.	Nursing		97
8.	Creative Technologies		88
9.	Biochemistry		83
9.	Marketing		83
11.	Finance		71
12.	Dual-Degree Engineering		66
12.	Elementary Education		66
14.	Accounting		65
15.	Secondary Education		55
16.	Political Science		53
17.	Environmental Science		50

## Number of Undergraduate Majors in Rank Order – April 3, 2023 (Continued)

Rank	Major/Concentration	Number of (1st, 2nd, and 3rd)	
		Concentrations	Majors
18.	Economics		44
19.	Chemistry		41
19.	Mathematics		41
	<i>Computer Science</i>	4	
	<i>Mathematics</i>	28	
	<i>Mathematics Education</i>	9	
21.	English		40
21.	Spanish		40
23.	Prenursing		39
24.	History		36
25.	Computer Science		31
25.	Religion and Philosophy		31
	<i>Biblical and Christian Studies</i>	23	
	<i>Ethics and Value Theory</i>	1	
	<i>Philosophy</i>	6	
	<i>Philosophy and Religious Studies</i>	1	
27.	Creative Writing		30
27.	Prebusiness–Undeclared		30
29.	Sports Administration		29
30.	Art		28
	<i>Art Education</i>	5	
	<i>Art History</i>	3	
	<i>Fine Art/Studio</i>	19	
	<i>Art History and Fine Art/Studio</i>	1	
31.	Sociology and Anthropology		25
	<i>Anthropology</i>	8	
	<i>Sociology</i>	13	
	<i>Sociology and Anthropology</i>	4	
32.	Applied Physics		23
32.	Music Education		23
34.	Physics		15
	<i>General Physics</i>	8	
	<i>Professional Track</i>	7	
35.	Environmental Studies		14
	<i>Environmental Policy</i>	6	
	<i>Environmental Studies</i>	8	

## Number of Undergraduate Majors in Rank Order – April 3, 2023 (Continued)

Rank	Major/Concentration	Number of (1st, 2nd, and 3rd)	
		Concentrations	Majors
36.	Music		13
37.	International Business		12
37.	Music with Elective Studies in Business		12
37.	Theatre		12
40.	International Affairs		11
41.	History Plus		9
	<i>History Plus Environment</i>	<i>1</i>	
	<i>History Plus Global Issue</i>	<i>3</i>	
	<i>History Plus Justice</i>	<i>2</i>	
	<i>History Plus the Public</i>	<i>3</i>	
41.	Middle-Grades Education		9
43.	Data Analytics		6
44.	German		5
	<i>German</i>	<i>3</i>	
	<i>German Studies</i>	<i>2</i>	
44.	Music Performance		5
46.	French		4
	<i>French</i>	<i>2</i>	
	<i>French Studies</i>	<i>2</i>	
47.	International Studies		3
48.	Individually Designed		2
	<i>Entrepreneurial Marketing and Communication</i>	<i>1</i>	
	<i>Organizational Leadership Development</i>	<i>1</i>	
(48 majors total; where applicable, concentrations noted in italics)			
SUBTOTAL			2,362
LESS Second Majors			-312
LESS Third Majors			-3
LESS Students with Two Degrees and Two First Majors			-9
TOTAL DEGREE-SEEKING UNDERGRADUATES			2,038
Joint Enrollment			6
Nondegree			13
Undeclared			74
	<i>Non-Preprofessional</i>	<i>57</i>	
	<i>Preprofessional</i>	<i>17</i>	
TOTAL UNDERGRADUATE STUDENTS			2,131

Number of Graduate Majors  
Official Counting Date: April 3, 2023

Degrees/Majors	Number of Graduate	
	Majors	Degrees
<b>GRADUATE STUDENTS:</b>		
M.B.A.		46
<i>General Business</i>	46	
M.Ed.		5
<i>Curriculum and Instruction</i>	4	
<i>Educational Leadership</i>	1	
Ed.S.		36
<i>Curriculum and Instruction</i>	36	
Nondegree		10
<i>Graduate Education</i>	4	
<i>Graduate Specialist</i>	6	
<hr style="border-top: 1px dashed black;"/>		
<b>TOTAL GRADUATE STUDENTS</b>	<b>97</b>	<b>97</b>

Number Undergraduate and Graduate Majors Summary  
Official Counting Date: April 3, 2023

Major	Number	
	Majors (1st)*	Students
Undergraduate	2,140	2,131
Graduate	97	97
<hr style="border-top: 1px dashed black;"/>		
<b>Total Students</b>	<b>2,237</b>	<b>2,228</b>

\*Includes first major for second degrees; and excludes second and third majors.

Source of data: Institutional Research and Registrar

**Dean's List Summary  
(Undergraduates)**

2017-2018 Through 2022-2023  
As of July 25, 2023

Session	Number on Dean's List	Number With 4.00	Percent on Dean's List With 4.00	Undergraduate FTE Enrollment	Percent of FTE With 4.00	Percent of FTE on Dean's List
2017-2018						
Summer	3	0	0.0	187	0.0	1.6
Fall	757	134	17.7	1,960	6.8	38.6
Spring	733	132	18.0	1,866	7.1	39.3
2018-2019						
Summer	4	0	0.0	193	0.0	2.1
Fall	792	152	19.2	1,918	7.9	41.3
Spring	738	135	18.3	1,838	7.3	40.2
2019-2020						
Summer	2	0	0.0	186	0.0	1.1
Fall	821	191	23.3	1,924	9.9	42.7
Spring	861	275	31.9	1,838	15.0	46.8
2020-2021						
Summer	5	1	20.0	195	0.5	2.6
Fall	940	251	26.7	1,992	12.6	47.2
Spring	871	225	25.8	1,910	11.8	45.6
2021-2022						
Summer	10	0	0.0	186	0.0	5.4
Fall	989	255	25.8	2,166	11.8	45.7
Spring	971	251	25.8	2,042	12.3	47.6
2022-2023						
Summer	9	4	44.4	216	1.9	4.2
Fall	1,053	280	26.6	2,236	12.5	47.1
Spring	1,020	272	26.7	2,114	12.9	48.2

Source of data: Institutional Research

Degrees Granted  
2009-2010 Through 2022-2023

Years	B.A.	B.Mus.	B.S.	B.S.N.	Bachelor's Total	M.B.A.	M.A.T.	M.Ed.	Ed.S.	Graduate Total	Overall Total
2009-2010 <sup>a</sup>	125	3	210	N/A	338	14	N/A	26	5	45	383
2010-2011 <sup>b</sup>	107	6	263	N/A	376	18	N/A	28	10	56	432
2011-2012 <sup>c</sup>	119	3	213	N/A	335	11	N/A	36	27	74	409
2012-2013 <sup>d</sup>	114	1	291	N/A	406	13	1	21	45	80	486
2013-2014 <sup>e</sup>	119	4	343	N/A	466	14	7	15	17	53	519
2014-2015 <sup>f</sup>	88	4	312	15	419	7	8	8	12	35	454
2015-2016 <sup>g</sup>	105	3	323	30	461	11	6	0	76	93	554
2016-2017 <sup>h</sup>	112	3	350	26	491	10	5	7	46	68	559
2017-2018 <sup>i</sup>	98	3	309	24	434	11	0	0	50	61	495
2018-2019 <sup>j</sup>	100	2	354	26	482	16	0	4	48	68	550
2019-2020 <sup>k</sup>	73	12	292	37	414	25	0	23	18	66	480
2020-2021 <sup>l</sup>	83	11	309	45	448	14	0	11	40	65	513
2021-2022 <sup>m</sup>	80	6	260	32	378	26	0	9	31	66	444
2022-2023 <sup>n</sup>	83	8	348	24	463	30	0	10	52	92	555

NOTE: Degrees awarded July 1 through June 30.

<sup>a</sup>Three students each received two degrees BA and BS for 2009-2010.

<sup>b</sup>Five students each received two degrees (BA and BS) for 2010-2011.

<sup>c</sup>Three students each received two degrees (BA and BS) for 2011-2012.

<sup>d</sup>Three students each received two degrees (two received BA and BS; one received BA and BSH) for 2012-2013.

<sup>e</sup>One student received two degrees (BA and BSH) for 2013-2014.

<sup>f</sup>Four students received two degrees (three received BA and BS; one received BS and BSN) for 2014-2015.

<sup>g</sup>Two students each received two degrees, BA and BS for 2015-2016.

<sup>h</sup>Three students each received two degrees, BA and BS for 2016-2017.

<sup>i</sup>Two students each received two degrees, BA and BS for 2017-2018.

<sup>j</sup>Five students each received two degrees, (two received BA and BS; two received BA and BSH; one received BS and BSN) for 2018-2019.

<sup>k</sup>Two students each received two degrees (one received BA and BSH; one received BS and BMUSH) 2019-2020.

**Data Correction:** Two additional students were added to B.S. and Total degrees for 2019-2020, on 11/4/2020.

<sup>l</sup>Three students each received two degrees (one received BA and BSH; two received BA and BS) for 2020-2021.

<sup>m</sup>Two students each received two degrees (both received BA and BS) for 2021-2022.

<sup>n</sup>Six students each received two degrees (all received BA and BS) for 2022-2023.

Source of data: Registrar and Institutional Research Annual Report



Total Degrees Awarded  
2021-2022 and 2022-2023

Degree	August 2021	December 2021	May 2022 <sup>a</sup>	Total	August 2022	December 2022	May 2023 <sup>b</sup>	Total
B.A.	3	11	52	66	6	14	51	71
B.A. Honors	0	1	13	14	0	1	11	12
B.Mus.	1	0	5	6	0	0	7	7
B.Mus. Honors	0	0	0	0	0	1	0	1
B.S.	12	19	205	236	18	35	267	320
B.S. Honors	0	3	21	24	1	3	24	28
B.S.N.	0	0	32	32	0	0	24	24
B.S.N Honors	0	0	0	0	0	0	0	0
M.B.A.	6	0	20	26	7	0	23	30
M.Ed.	7	1	1	9	5	5	0	10
Ed.S.	9	12	10	31	17	17	18	52
<b>Total</b>	<b>38</b>	<b>47</b>	<b>359</b>	<b>444</b>	<b>54</b>	<b>76</b>	<b>425</b>	<b>555</b>

<sup>a</sup>Two undergraduate students completed two degrees (both with BA and BS).

<sup>b</sup>Six undergraduate students completed two degrees (all with BA and BS).

Source of data: Registrar and Institutional Research Annual Report

Undergraduate Degrees Awarded 2022-2023 by Degree and Major

Degree		August		December		May	
		Primary	Secondary	Primary	Secondary	Primary	Secondary
BA	Art: Fine Art/Studio					1	
	Communication: Communication and Media Studies					1	
	Communication: Digital Storytelling					3	
	Communication: Filmmaking and Cinematic Arts			1		6	1
	Communication: Multimedia Journalism			1			
	Communication: Public Relations	1		6		5	
	Communication: Sports Communication	1		1		1	
	Creative Technologies				1		
	Creative Writing					3	
	Economics						1
	English	1		1		2	
	German: German						1
	German: German Studies				1	1	
	History				1	4	
	History Plus: History Plus the Justice						1
	History Plus: History Plus the Public					1	
	Individually Designed: Organizational Leadership Development					1	
	Music	1				3	
	Political Science	1		1		3	
	Psychology			1		1	
	Religion and Philosophy: Biblical and Christian Studies			1	1	6	
	Religion and Philosophy: Philosophy					1	
	Religion and Philosophy: Philosophy and Religious Studies					1	
	Secondary Education		1				1
	Sociology and Anthropology: Anthropology			1		1	
	Sociology and Anthropology: Sociology					1	1
	Spanish	1				4	1
	Theatre					1	
<b>Subtotal</b>		<b>6</b>	<b>1</b>	<b>14</b>	<b>4</b>	<b>51</b>	<b>7</b>
BAH	Art: Art History						1
	Communication: Communication and Media Studies					1	
	Communication: Digital Storytelling			1			
	Communication: Public Relations					1	1
	Creative Writing					3	
	English					1	
	History					2	
	International Studies					1	
	Religion and Philosophy: Philosophy					1	
Sociology and Anthropology: Sociology and Anthropology					1		
<b>Subtotal</b>		<b>0</b>	<b>0</b>	<b>1</b>	<b>0</b>	<b>11</b>	<b>2</b>
B.Mus.	Music Education					2	
	Music Performance			1		2	
	Music with Elective Studies in Business					3	
<b>Subtotal</b>		<b>0</b>	<b>0</b>	<b>1</b>	<b>0</b>	<b>7</b>	<b>0</b>

Undergraduate Degrees Awarded by Degree and Major, 2022-2023 (Continued)

Degree	August		December		May	
	Primary	Secondary	Primary	Secondary	Primary	Secondary
BS Accounting	1		1		13	2
Animal Science: Pre-Vet/Pre-Professional Science	2		4		29	
Animal Science: Production/Management			2		6	
Applied Physics			2		3	
Biochemistry	1				19	3
Biology: Cellular and Biomedical			1		18	2
Biology: Concentration I					1	
Biology: Concentration II			1			
Biology: Integrative Biology					2	
Biology: Wildlife, Ecology and Conservation			1		2	
Chemistry	1				6	
Communication: Digital Storytelling					1	
Communication: Public Relations					1	
Computer Science					1	
Creative Technologies	3				15	4
Dual-Degree Engineering			1		2	
Early Childhood Education	3					
Economics					7	
Elementary Education					13	
Environmental Science (no concentration)			2		5	3
Environmental Science: Public Policy			1			
Exercise Science: Allied Health Pre-Professional					21	2
Exercise Science: Clinical/Research					1	
Exercise Science: Strength and Conditioning					6	
Finance	1				5	6
International Business						1
International Studies					1	1
Management	1		5	2	16	9
Marketing			2		20	2
Mathematics: Computer Science					1	
Mathematics: Mathematics					3	2
Mathematics: Mathematics Education					1	
Middle-Grades Education					3	
Music						1
Physics: General Physics			2		1	
Physics: Professional Track					2	
Political Science	1		1		4	
Psychology	4		2		30	3
Religion and Philosophy: Biblical and Christian Studies						1
Secondary Education						2
Sociology and Anthropology: Anthropology					1	
Sociology and Anthropology: Sociology					3	
Sociology and Anthropology: Sociology and Anthropology			1			
Spanish						3
Sports Administration			6		4	
<b>Subtotal</b>	<b>18</b>	<b>0</b>	<b>35</b>	<b>2</b>	<b>267</b>	<b>47</b>

Undergraduate Degrees Awarded by Degree and Major, 2022-2023 (Continued)

Degree		August		December		May	
		Primary	Secondary	Primary	Secondary	Primary	Secondary
BSH	Accounting					1	
	Animal Science: Pre-Vet/Pre-Professional Science			2		5	
	Applied Physics					2	1
	Biochemistry			1		3	
	Biology: Cellular and Biomedical				1	2	
	Chemistry					1	
	Early Childhood Education	1					
	Economics					2	
	Exercise Science: Allied Health Pre-Professional					1	
	Mathematics: Computer Science						1
	Mathematics: Mathematics					1	1
	Physics: General Physics					1	
	Political Science					1	
	Psychology					4	
<b>Subtotal</b>		<b>1</b>	<b>0</b>	<b>3</b>	<b>1</b>	<b>24</b>	<b>3</b>
BSN	Nursing					24	
	<b>Subtotal</b>	<b>0</b>	<b>0</b>	<b>0</b>	<b>0</b>	<b>24</b>	<b>0</b>
<b>Total Degrees/Majors<sup>1</sup></b>		25	1	54	7	384	59
<b>Total Students<sup>2</sup></b>		25		53		379	

<sup>1</sup>Includes double degrees (majors reported with first major for each degree); second and third majors (reported with secondary majors).

<sup>2</sup>Excludes double degrees; second majors.

Some majors may be distributed through several degrees, especially those majors that offer both B.A. and B.S. degrees (such as Psychology). However, even those that are offered for only one degree may be divided between that degree and the degree with honors listing in this table.

Six students in 2022-2023 earned two degrees each (one in December 2022, with BA and BS; five in May 2023, all with BA and BS). Some majors have two numbers reported. The first is the total number of students who indicated the discipline as a major. Since several pursued multiple majors, and six *earned two degrees*, the total number of majors is greater than the number of students receiving degrees. The "Secondary" column shows the number of students for whom the major listed was their second major.

Graduate Degrees Awarded by Degree and Major  
2022-2023

Degree/Major	August 2022	December 2022	May 2023
<b>MASTER OF BUSINESS ADMINISTRATION</b>			
Business Administration	7	0	23
<i>SUBTOTAL</i>	7	0	23
<b>MASTER OF EDUCATION</b>			
Curriculum and Instruction	5	4	0
Educational Leadership	0	1	0
<i>SUBTOTAL</i>	5	5	0
<b>EDUCATION SPECIALIST</b>			
Curriculum and Instruction	17	17	18
Educational Leadership	0	0	0
<i>SUBTOTAL</i>	17	17	18
<b>TOTAL</b>	29	22	41

Source of data: Registrar and Institutional Research Annual Report

Undergraduate Students Graduating With Honors  
2016-2017 Through 2022-2023

Year/Session	Number Graduating	Number With Honors	Percent With Honors
2016-2017 <sup>a</sup>			
Summer	12	2	16.7
Fall	52	15	28.8
Spring*	424	167	39.4
Total*	488	184	37.7
2017-2018 <sup>b</sup>			
Summer	14	1	7.1
Fall	52	18	34.6
Spring	366	143	39.1
Total	432	162	37.5
2018-2019 <sup>c</sup>			
Summer	19	1	5.3
Fall	48	16	33.3
Spring	410	169	41.2
Total	477	186	39.0
2019-2020 <sup>d</sup>			
Summer	13	1	7.7
Fall**	47	14	29.8
Spring	352	158	44.9
Total**	412	173	42.0
2020-2021 <sup>e</sup>			
Summer	23	1	4.3
Fall**	43	24	55.8
Spring	379	192	50.7
Total**	445	217	48.8
2021-2022 <sup>f</sup>			
Summer	16	1	6.3
Fall	34	15	44.1
Spring	326	171	52.5
Total	376	187	49.7
2022-2023 <sup>h</sup>			
Summer	25	9	36.0
Fall	53	22	41.5
Spring	379	209	55.1
Total	457	240	52.5

<sup>a</sup>Data corrected August 2018.

<sup>\*\*</sup>Data corrected November 4, 2020

<sup>a</sup>2016-2017: Summer 2016, 12 degrees were awarded to 12 students; Fall 2016, 52 degrees were awarded to 52 students; Spring 2017, 427 degrees were awarded to 424 students (3 students with 2 degrees)—*largest graduating class since May 2016* ; and overall total for 2016-2017 of 491 degrees awarded to 488 students.

<sup>b</sup>2017-2018: Summer 2017, 14 degrees were awarded to 14 students; Fall 2017, 53 degrees were awarded to 52 students (1 student with 2 degrees); Spring 2018, 367 degrees were awarded to 366 students (1 student with 2 degrees); and overall total for 2017-2018 of 434 degrees awarded to 432 students.

<sup>c</sup>2018-2019: Summer 2018, 19 degrees were awarded to 19 students; Fall 2018, 48 degrees were awarded to 48 students; Spring 2019, 415 degrees were awarded to 410 students (5 student with 2 degrees); and overall total for 2018-2019 of 482 degrees awarded to 477 students.

<sup>d</sup>2019-2020: Summer 2019, 13 degrees were awarded to 13 students; Fall 2019, 45 degrees were awarded to 45 students; Spring 2020, 354 degrees were awarded to 352 students (2 student with 2 degrees); and overall total for 2019-2020 of 412 degrees awarded to 410 students.

<sup>e</sup>2020-2021: Summer 2020, 23 degrees were awarded to 23 students; Fall 2020 44 degrees were awarded to 43 students (1 student with 2 degrees); Spring 2021, 381 degrees were awarded to 379 students (2 students with 2 degrees); and overall total 448 degrees awarded to 445 students.

<sup>f</sup>2021-2022: Summer 2021, 16 degrees were awarded to 16 students; Fall 2021, 34 degrees were awarded to 34 students; Spring 2022, 328 degrees were awarded to 326 students (2 students with 2 degrees); and overall total 378 degrees awarded to 376 students.

<sup>h</sup>2022-2023: Summer 2022, 25 degrees were awarded to 25 students; Fall 2022, 54 degrees were awarded to 53 students; Spring 2023, 384 degrees were awarded to 379 students (6 students with 2 degrees); and overall total 463 degrees awarded to 457 students.

Alumni Receiving Master's Degree or Higher  
As of October 17, 2022

Year Graduated	Percent Five-Years <sup>1</sup>
2008-09	26.2%
2009-10	29.3%
2010-11	31.3%
2011-12	30.4%
2012-13	30.3%
2013-14	30.2%
2014-15	27.5%
2015-16	25.5%
2016-17	30.9%
2017-18	27.3%

<sup>1</sup> Percent of Berry bachelor degree recipients receiving Master's Degree or Higher within five years of graduation (by June 30th of fifth year), from Berry College or another institution.

Source of data:

National Student Clearinghouse data collected November 8, 2023.

## Section IV

### Faculty Profiles



Institutions Most Frequently Represented  
by Berry Faculty's Doctorates

Fall 2022

<b>College/University</b>	<b>Number Represented</b>
Florida State University	6
Indiana University	6
University of Georgia	6
University of Tennessee	5
Georgia Institute of Technology	4
University of Texas at Austin	4
Emory University	3
Georgia State University	3
Louisiana State University	3
Rutgers University	3
University of Alabama	3
University of Illinois at Urbana-Champaign	3
University of North Carolina at Chapel Hill	3
University of Virginia	3
West Virginia University	3
Auburn University	2
Mercer University	2
New Mexico State University	2
State University of New York	2
Tulane University	2
University of California at Irvine	2
University of California at Los Angeles	2
University of Kentucky	2
University of Louisville	2
University of North Texas	2
University of Notra Dame	2
University of Utah	2
University of Wisconsin	2
Virginia Polytechnic Institute State University	2

**College/University Represented (Continued)**

Additionally, one faculty member holds a terminal degree from each of the following institutions. Of the institutions represented, Florida State University, Indiana University, and the University of Georgia granted the largest number of the doctorates, each having 6 or 4.0 percent.

Argosy University	University of Connecticut
Baylor University	University of Denver
Bowling Green State University	University of Durham
California Institute of Technology	University of Florida
Case Western Reserve University	University of Houston
Claremont Graduate University	University of Iowa
Clemson University	University of Kansas
Dartmouth University	University of Las Palmas de Gran Canaria
Johns Hopkins University	University of Massachusetts
Kent State University	University of Memphis
Massachusetts Institute of Technology	University of Miami
McGill University	University of Michigan
Michigan State University	University of Mississippi
New York Medical College	University of Missouri
North Carolina State University	University of Montana
Nova University	University of Nebraska
Ohio State University	University of New Orleans
Ohio University	University of Pennsylvania
Oregon State University	University of Pittsburgh
Pennsylvania State University	University of South Carolina
Purdue University	University of Southern Mississippi
Sam Houston State University	University of Surrey at Guildford, United Kingdom
South Dakota State University	University of Texas at Arlington
Texas A&M University	University of Texas at San Antonio
Texas State University	University of Vermont
The University of Chicago Divinity School	University of Washington
University of Alabama at Birmingham	Virginia Commonwealth University
University of Alabama at Huntsville	Washington State University
University of California at Davis	Wayne State University
University of California at Santa Barbara	Western Michigan University
University of Cincinnati	Yale University
University of Cincinnati-Conservatory of Music	

Berry College  
Faculty\*  
Fall 2022

School	No. of Full-Time Faculty	Number of Part-Time Faculty						Total Faculty	Total FTE
		Adjuncts	Part-Time Instructional Faculty <sup>1</sup>	Staff <sup>2</sup>	Administrators <sup>3</sup>	Total Part-Time	Part-Time FTE <sup>4</sup>		
Campbell School of Business	22	5	0	1	2	8	1.70	30	23.70
Charter School of Education and Human Sciences	27	25	1	9	2	37	8.70	64	35.70
Evans School of Humanities, Arts, and Social Sciences	67	14	1	5	1	21	8.20	88	75.20
School of Mathematical and Natural Sciences	49	0	0	2	1	3	1.10	52	50.10
Administrator (Provost)	0	0	0	0	1	1	0.00	1	0.00
<b>Total</b>	<b>165</b>	<b>44</b>	<b>2</b>	<b>17</b>	<b>7</b>	<b>70</b>	<b>19.70</b>	<b>235</b>	<b>184.70</b>

\*Excludes BCC courses and NCR reassigned time.

<sup>1</sup>Includes part-time instructional faculty in phased retirement.

<sup>2</sup>Includes full-time staff (including coaches) with part-time teaching responsibilities.

<sup>3</sup>Administrators with faculty rank (with or without teaching responsibilities)—Provost, Dean of Academic Services, Interim Assistant Provost and four school deans.

<sup>4</sup>Part-Time FTE calculation: Part-time contact teaching load hours divided by twelve equal part-time FTE.

NOTE: Full-time (*includes clinical and visiting faculty*) and part-time faculty counts are based on contract status

Source of data: Faculty contracts data base, Human Resource Office; Faculty Teaching Load Reports, Institutional Research

*Full-Time Faculty*  
Rank and Degree  
Fall 2022

Rank	Number With				Total	Percent of Those in Rank With Doctorate
	Doctorate	Terminal Master's	Master's	Bachelor's		
Professor	39	0	0	0	39	100.0
Clinical Professor	0	0	0	0	0	0.0
Associate Professor	48	3	0	0	51	94.1
Clinical Associate Professor	3	0	0	0	3	100.0
Assistant Professor	40	4	0	0	44	90.9
Clinical Assistant Professor	7	0	1	0	8	87.5
Subtotal	137	7	1	0	145	94.5
Instructor	2	1	1	1	5	40.0
Clinical Instructor	0	0	1	1	2	0.0
Lecturer	3	1	9	0	13	23.1
Total	142	9	12	2	165	86.1

NOTE: Full-time and part-time faculty counts are based on contract status (*includes visiting faculty*).

Source of data: Faculty contracts data base, Human Resource Office; Faculty Teaching Load Reports, Institutional Research

*Full-Time Faculty*  
Gender Distribution Among Ranks  
Fall 2022

Rank	Males		Females		Total	Percent Female of Total FT Faculty 2019 (N=163)
	No.	Percent of No. in Rank	No.	Percent of No. in Rank	M & F	
Professor	28	71.8	11	28.2	39	6.7
Clinical Professor	0	0.0	0	0.0	0	0.0
Associate Professor	29	56.9	22	43.1	51	13.3
Clinical Associate Professor	2	66.7	1	33.3	3	0.6
Assistant Professor	25	56.8	19	43.2	44	11.5
Clinical Assistant Professor	4	50.0	4	50.0	8	2.4
Instructor	3	60.0	2	40.0	5	1.2
Clinical Instructor	0	0.0	2	100.0	2	1.2
Lecturer	5	38.5	8	61.5	13	4.8
<b>Total</b>	<b>96</b>	<b>58.2</b>	<b>69</b>	<b>41.8</b>	<b>165</b>	<b>41.8</b>

NOTE: Full-time and part-time faculty counts are based on contract status (*includes visiting faculty*).

Source of data: Faculty contracts data base, Human Resource Office; Faculty Teaching Load Reports,  
Institutional Research

Berry College Faculty  
 Number and Percent Tenured in Top Three Ranks  
 Fall 2022

Rank	Number in Rank*	Number With Tenure	% of No. in Rank With Tenure
Professor	39	38	97.4
Clinical Professor	0	0	0.0
Associate Professor	51	49	96.1
Clinical Associate Professor	3	0	0.0
Assistant Professor	44	0	0.0
Clinical Assistant Professor	8	0	0.0
Total / % Top 3 Ranks	145	87	60.0
Administrators (Provost and Deans)	7	7	100.0
Total	152	94	61.8

\*Total includes all full-time faculty, including those with zero teaching loads and those who are not on tenure track (including visiting faculty). Seven administrators who are tenured are also included (Provost, Dean of Academic Services, Interim Assistant Provost, and four school deans with faculty rank).

Source of data: Faculty contracts data base, Human Resource Office

Full-Time-Equivalent Faculty and Faculty-Student Ratio  
2017-2018 Through 2022-2023

<b>Year and Session</b>	<b>FTE Faculty</b>	<b>Faculty-Student Ratio</b>	<b>Year and Session</b>	<b>FTE Faculty</b>	<b>Faculty-Student Ratio</b>
2017-2018			2020-2021		
Fall	184.4	1:11.1	Fall	179.1	01:11.7
Spring	182.1	1:10.8	Spring	175.4	01:11.4
2018-2019			2021-2022		
Fall	181.0	1:10.9	Fall	186.5	01:12.2
Spring	178.2	1:10.7	Spring	187.8	01:11.4
2019-2020			2022-2023		
Fall	178.9	01:11.1	<i>Fall*</i>	185.5	01:12.6
Spring	179.4	01:10.7	Spring	179.8	01:12.1

Source of data: Institutional Research; taken from teaching load reports

*\*Data updated October 6, 2023:*

Age Distribution of Full-Time Faculty\*  
October 5, 2023

<i>Age Bracket</i>	<i>Percentage in Age Bracket (N=165)</i>
20-24	0.0
25-29	6.1
30-34	9.1
35-39	13.3
40-44	10.9
45-49	13.9
50-54	12.1
55-59	12.7
60-64	12.7
65	1.2
66	1.8
67	1.8
68	0.6
69	0.6
70+	3.0
Total	100.0

Average = 49

\*Includes full-time faculty by contract.

Source of data: Faculty contracts database, Human Resource Office



## Section V

### Financial

Alumni Annual Giving  
2019-2020 Through 2022-2023

Item	2019-2020	2020-2021	2021-2022	2022-2023
Alumni Giving	\$2,277,237	\$1,792,980	\$1,893,795	\$1,964,819
Participation College Graduate	25.3%	23.8%	19.1%	16.92%
Number of College Graduate Alumni Donors	3,495	3,293	2,702	2,463

Source of data: Advancement Office

Berry College Financial-Aid Programs  
2019-2020 through 2022-2023

Item	2019-2020	2020-2021	2021-2022	2022-2023
<b>BERRY</b>				
Academic Merit Scholarships	\$ 28,458,325	\$ 31,720,890	\$ 35,706,527	\$ 37,155,818
Alumni & Friends Grants	\$ 5,549,301	6,372,218	7,394,575	8,476,426
Other Berry Scholarships (Talent, Major/Minor, International, etc.)	\$ 605,587	542,489	476,396	556,317
<b>SUBTOTAL</b>	<b>\$ 34,613,213</b>	<b>\$ 38,635,597</b>	<b>\$ 43,577,498</b>	<b>\$ 46,188,561</b>
<b>MATCHING GRANTS</b>				
Berry Yellow Ribbon Match	\$ 78,295	83,424	79,189	99,589
Berry REACH (GSFC)	\$ -	\$ 2,500	\$ 2,500	\$ 12,500
<b>SUBTOTAL</b>	<b>\$ 78,295</b>	<b>\$ 85,924</b>	<b>\$ 81,689</b>	<b>\$ 112,089</b>
<b>SPECIAL PROGRAMS</b>				
Berry Bonner Scholars	\$ 1,834,525	\$ 2,069,007	\$ 2,115,257	\$ 2,398,241
Bonner Scholars Foundation - Service	\$ 189,250	\$ 199,211	\$ 198,000	\$ 207,000
Bonner Scholars Foundation	\$ 110,000	\$ 187,505	\$ 178,750	\$ 179,129
Berry Gate of Opportunity	\$ 1,830,120	\$ 1,861,547	\$ 1,928,826	\$ 1,845,761
Donor Gate of Opportunity	\$ 1,748,756	\$ 1,798,271	\$ 1,866,550	\$ 1,864,186
Berry Other Gate of Opportunity	\$ 317,099	\$ 123,854	\$ 236,962	\$ 416,827
Berry Goizueta Scholarship	\$ 29,150	\$ 47,000	\$ 19,000	\$ 11,000
Goizueta Scholarship	\$ 136,350	\$ 149,500	\$ 174,000	\$ 192,784
Lettie Pate Whitehead Foundation	\$ 587,000	\$ 640,000	\$ 640,000	\$ 695,000
Leadership & Service Fellows	\$ 220,000	260,500	273,000	263,769
Berry WinShape College Program	\$ 20,000	26,000	25,000	14,500
WinShape College Program	\$ 582,392	547,767	574,605	577,685
<b>SUBTOTAL</b>	<b>\$ 7,604,642</b>	<b>\$ 7,910,162</b>	<b>\$ 8,229,950</b>	<b>\$ 8,665,882</b>
<b>STATE</b>				
HOPE Scholarship	\$ 2,748,188	3,093,968	3,368,566	3,899,469
Other State Programs	\$ 60,250	74,000	93,608	146,876
Student Access Loan Program	\$ 644,763	445,229	528,486	541,801
Tuition Equalization Grant	\$ 1,161,332	1,131,495	1,235,386	1,382,377
Zell Miller Scholarship	\$ 1,986,261	2,271,252	2,629,810	2,782,572
<b>SUBTOTAL</b>	<b>\$ 6,600,794</b>	<b>\$ 7,015,944</b>	<b>\$ 7,855,856</b>	<b>\$ 8,753,095</b>

Item	2019-2020	2020-2021	2021-2022	2022-2023
<b>FEDERAL</b>				
Pell Grant	\$ 2,055,878	\$ 2,262,879	\$ 2,742,916	\$ 2,870,694
Supplemental Ed. Opp. Grant (SEOG)	\$ 217,600	143,524	159,279	175,289
TEACH Grant	\$ 3,752	7,536	30,176	33,948
NOYCE Grant	\$ 60,690	50,880	104,011	116,620
Legion S-STEM				60,000
TRIO				47,000
Work Study	\$ 216,171	343,942	445,969	590,442
Subsidized Student Loans	\$ 2,647,878	2,259,781	2,234,291	2,126,239
Unsubsidized Student Loans	\$ 3,773,974	4,034,703	4,188,982	3,928,486
Parent Loan for UG Students (PLUS)	\$ 2,963,027	2,968,870	3,067,287	3,040,877
<b>SUBTOTAL</b>	<b>\$ 11,938,970</b>	<b>\$ 12,072,115</b>	<b>\$ 12,972,911</b>	<b>\$ 12,989,595</b>
<b>OTHER</b>				
JT Hall Loan	\$ 58,615	31,445	63,600	38,000
Outside Scholarships	\$ 504,544	558,537	682,327	655,998
Roughgarden Loan	\$ 4,000	8,000	13,711	4,000
<b>SUBTOTAL</b>	<b>\$ 567,159</b>	<b>\$ 597,982</b>	<b>\$ 759,638</b>	<b>\$ 697,998</b>
<b>TOTAL</b>	<b>\$ 61,403,073</b>	<b>\$ 58,321,638</b>	<b>\$ 65,165,903</b>	<b>\$ 68,629,249</b>

Source of data: Financial Aid Office